

# End of Lease Information Sheet

**GIPPSLAND  
PEST MANAGEMENT**

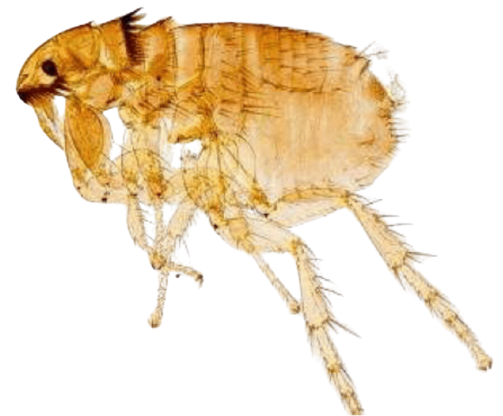


As part of the moving-out process, tenants with pets are often required to organize an End of Lease Treatment. This is a preventative measure to ensure that any fleas or potential pests left behind by pets are eliminated, leaving the property in excellent condition for the next occupants.

## What are Fleas?

Fleas are tiny, wingless insects that act as external parasites, feeding on the blood of mammals and birds. Commonly associated with household pets like cats and dogs, these pests can jump long distances, making it easy for them to move between animals and different areas of a home. They are most often brought into homes through pets, but they can also be transferred via clothing, furniture, or even wildlife.

Fleas can also be hard to detect at first, making it crucial to perform a preventative treatment when vacating a property.



## Why do you need to get an End of Lease Treatment done?☒

If you've had pets in a rental property, many lease agreements require an End of Lease Treatment to prevent potential flea infestations. Even if your pet seemed flea-free, fleas, eggs, and larvae can remain hidden in carpets, furniture, or outdoor areas. These pests can lie dormant for weeks or months before hatching, causing problems for future tenants.

A professional treatment ensures any fleas are completely eliminated, which helps secure your bond and fulfill your lease obligations. It also gives landlords peace of mind that the property is pest-free and ensures a smooth transition for the next occupants, protecting your rental history and reputation as a responsible tenant.

## Why are Flea's a Problem?

Fleas can cause several issues in homes, including:

- **Discomfort for Pets:** Flea bites cause irritation and itching for pets. In severe cases, pets can develop flea allergy dermatitis, a hypersensitive reaction to flea saliva.
- **Health Concerns:** Fleas can transmit tapeworms and other parasites to pets, and in rare cases, humans. They can also spread diseases like typhus and cat scratch fever.
- **Home Infestations:** Once inside, fleas can quickly infest a home. Eggs fall off pets into carpets, upholstery, and bedding, leading to a widespread infestation that's hard to control without professional treatment.

**For more information:**

**P** 0458 003 430☒

**E** info@gippsppest.com.au☒

**www.gippsppest.com.au**